



Light Measurement Report

Print date: 10/22/2025

Measurement date and time: 10/22/2025 2:57:23 PM – Measurement no. VFR-251022-0276-MS

Operator: Shawn Blaszak

Tested Light Source

Product Name	Dram: DR-M-PC37_PC78-MTP-27-1_10V_UNV
Manufacturer	RBW
Product Description	Dram-Medium-Army Green_Heritage Cream-Matte PET-2700K-1% Dimming, 0-10V Control, 120V to 277V "Universal Input" (External Driver), Input Current: 300mA, Driver Model: ESS015W-0350-42



Light Quality

CRI: 91.2

Color Temperature

2587 K

Color Match

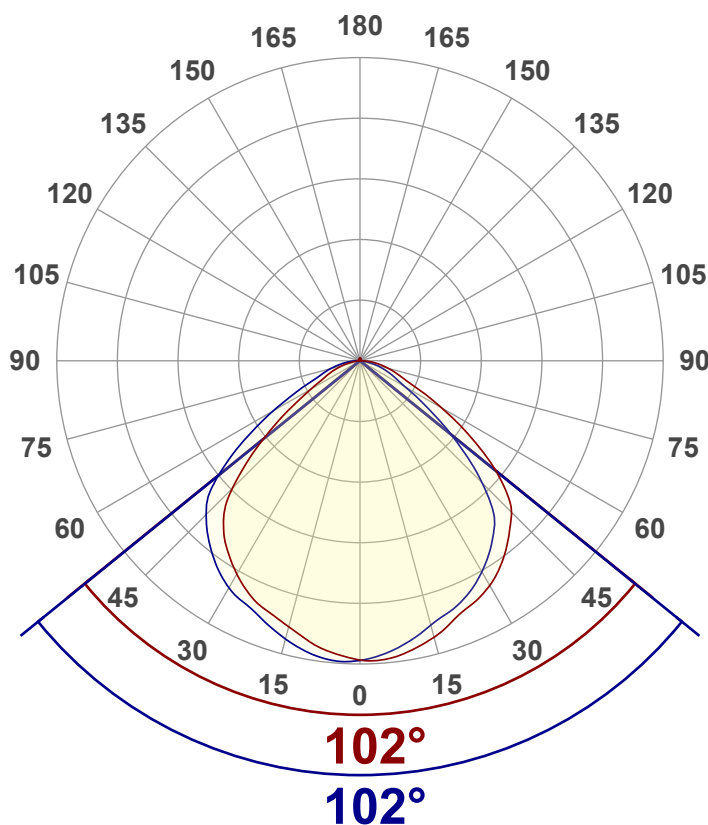
CIE1931
x: {CIEx#}
y: {CIEy#}

Summary of Results

Total Lumen Output	1041 lm
Luminaire Efficacy	73 lm/W
Peak Intensity and Beam Angle	435 cd - 102°
Color Rendering TM13-18	R _r 90.9 – R _g 97.8
Color Shift, CIE duv	Duv 0.0007
MacAdams Steps	3
Flicker	SVM 0.49 – PstLM 0.01
Input Power, Power and Displ. Factors	14.2 W – PF 0.99 – DPF 1.0
Input RMS Voltage and Current	119 V – 0.121 A
Frequency of Input Power	60 Hz

Luminous Intensity diagram

Unit: 0-100% of peak intensity



Main Values

Output (total Lumen)	1041 lm
Lumen Up% / Down%	1.04% / 98.96%
Peak Intensity	435 cd
Beam Angle (50%-FWHM)	101.95°

Cut-off Angle

Average 2,5%	167.7°
--------------	--------

Field Angle

Average 10%	143.7°
-------------	--------

Intensity Ratio

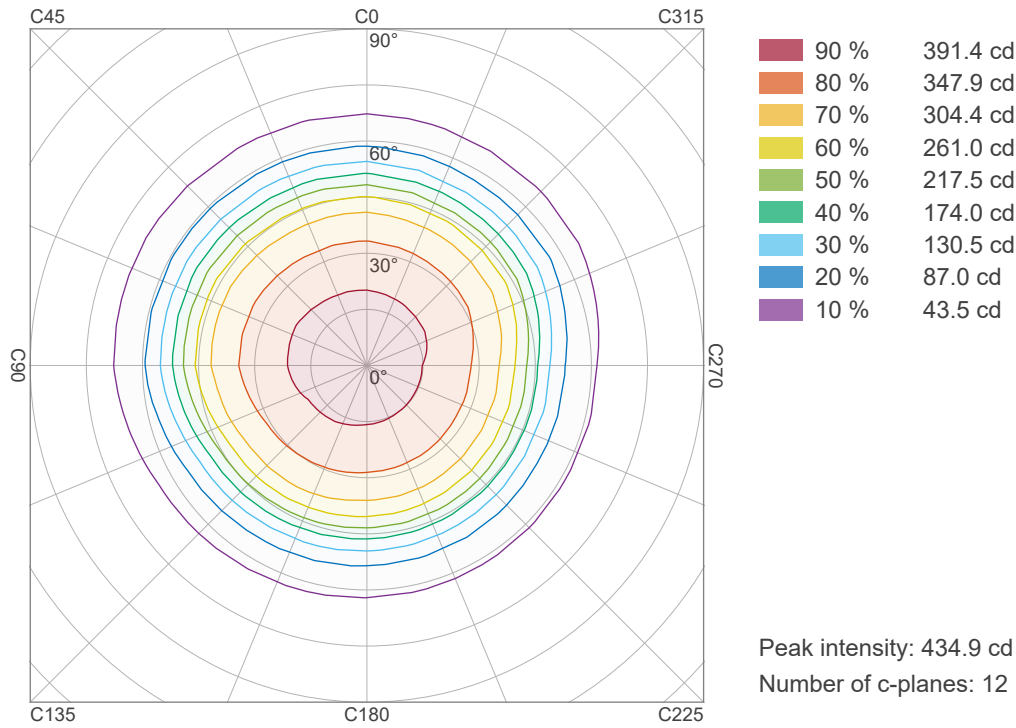
In 120° cone	87.5%
In 90° cone	63.2%

C000-C180

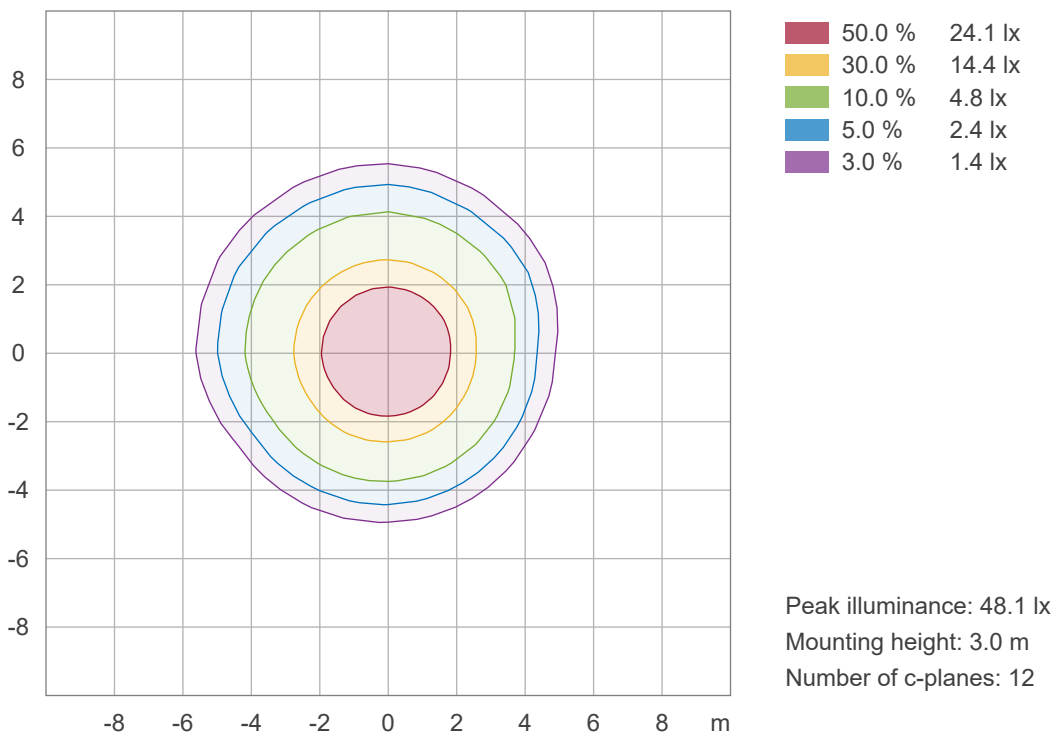
C090-C270



Iso-intensity Diagram (Iso-candela)



Iso-illuminance Diagram (Iso-lux)





Light Measurement Report

Print date: 10/22/2025

Measurement date and time: 10/22/2025 2:57:23 PM – Measurement no. VFR-251022-0276-MS

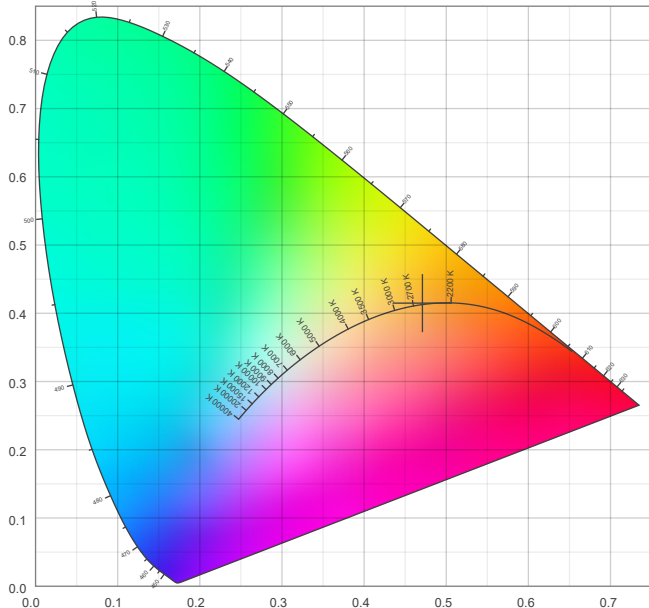
Operator: Shawn Blaszk

Color details

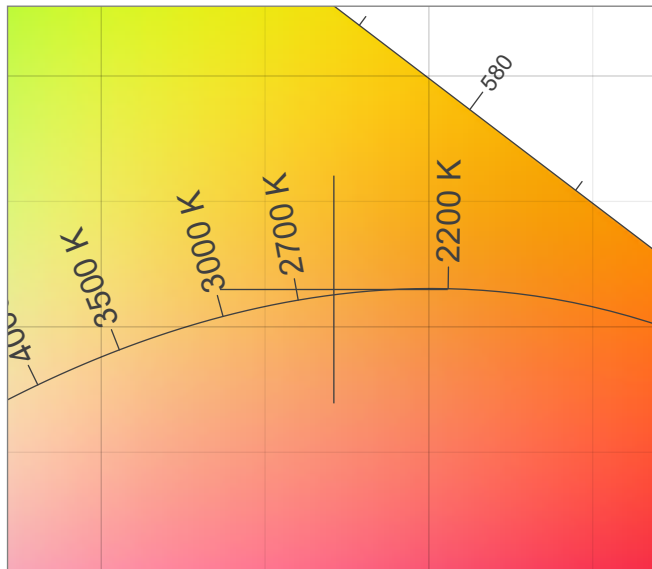
Correlated Color Temperature, Target CCT = 2587 K
Correlated Color Temperature, Measured CCT = 2587 K
Color Rendering Index CRI 91.2
Color Rendering Index, R9 (red component) R9 = 48.2
Color Rendering TM30-18 R_r 90.9 – R_g 97.8
Color Quality Scale CQS = 89.0

MacAdam Steps 3
Color coordinates CIE 1931 (x;y) = (0.471;0.415)
Color coordinate CIEs 1960 (u;v) = (0.268;0.354)
Color deviation from BBL Duv = 0.0007
Color coordinate CIEs 1976 (CIELUV)(u';v') = (0.268;0.531)

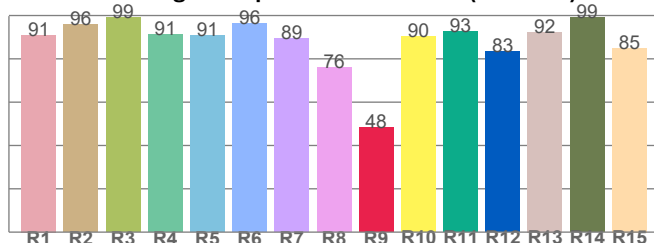
CIE 1931



CIE 1931 – zoomed on Planckian locus



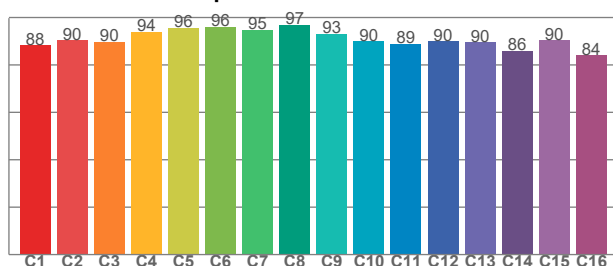
Color Rendering Index per reference color (CIE 1995)



CRI R values, only R1-R8 are used to calculate final CRI value

R1	R2	R3	R4	R5	R6	R7	R8	R9	R10	R11	R12	R13	R14	R15
91.0	96.0	99.0	91.2	90.9	96.4	89.3	75.9	48.2	90.2	92.7	83.3	92.4	99.2	85.0

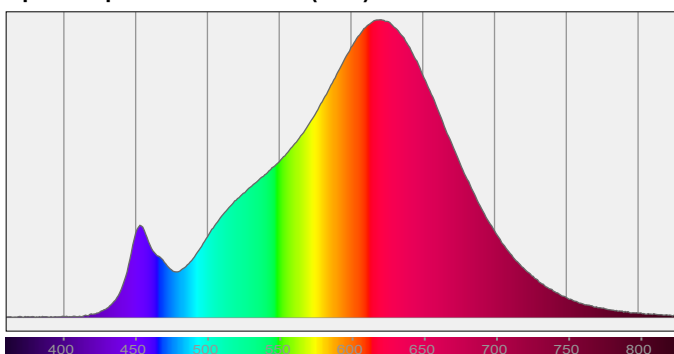
TM30-18 Rf-values per hue bin



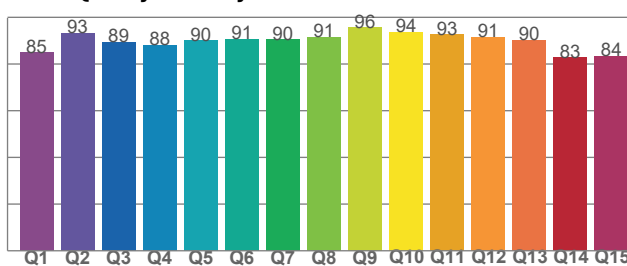
TM30 C values, 16 binned values out of total of 99 C values

C1	C2	C3	C4	C5	C6	C7	C8	C9	C10	C11	C12	C13	C14	C15	C16
88.2	90.3	89.7	94.0	95.6	96.2	94.7	96.9	93.0	89.9	89.0	89.9	89.6	86.0	90.4	84.1

Spectral power distribution (SPD) / W/nm – 0-100%



Color Quality Scale by reference color



CQS Q values

Q1	Q2	Q3	Q4	Q5	Q6	Q7	Q8	Q9	Q10	Q11	Q12	Q13	Q14	Q15
84.9	93.3	89.5	88.1	90.0	90.7	90.5	91.4	95.5	93.7	92.6	91.4	90.2	82.8	83.5



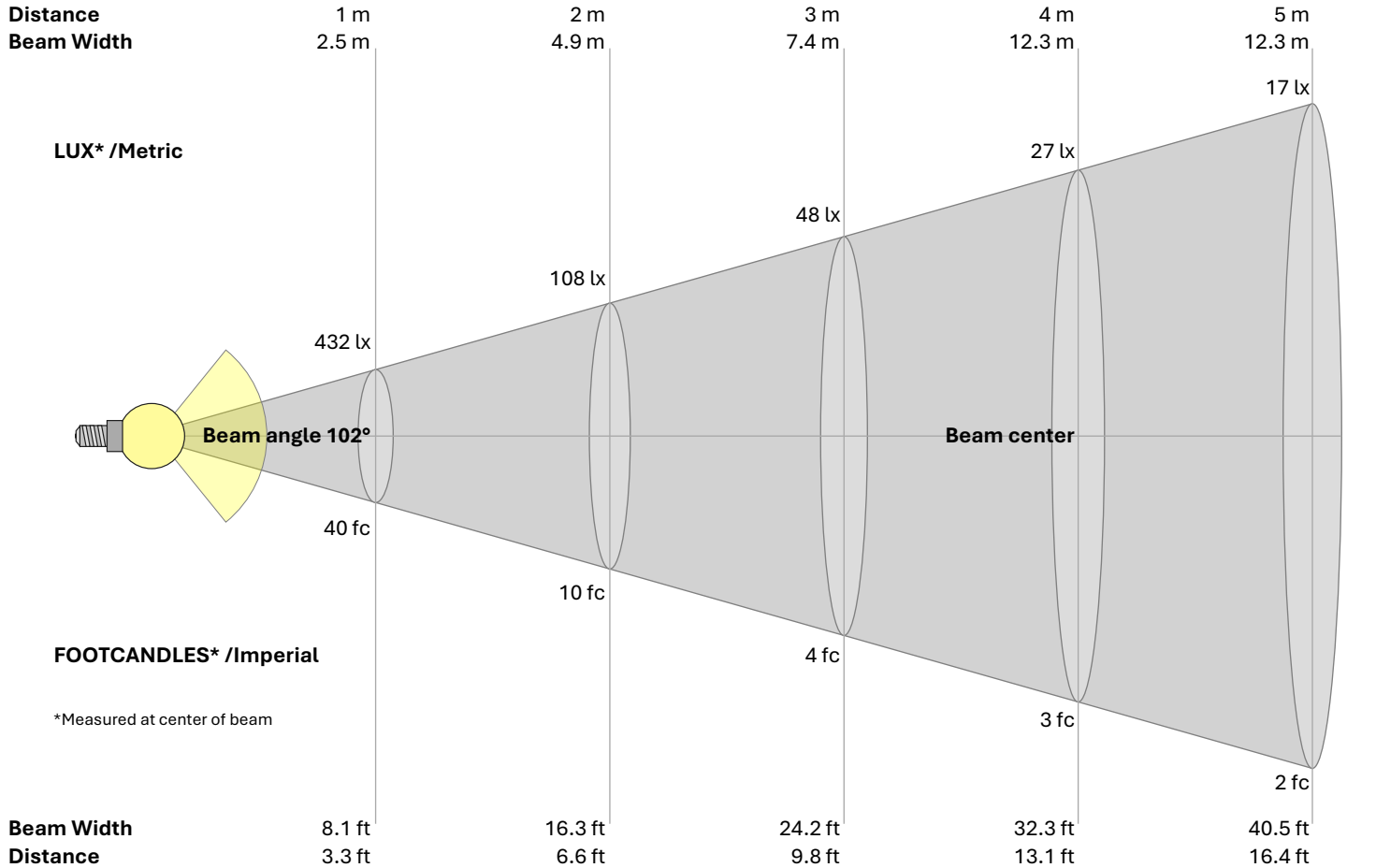
Light Measurement Report

Print date: 10/22/2025

Measurement date and time: 10/22/2025 2:57:23 PM – Measurement no. VFR-251022-0276-MS

Operator: Shawn Blaszak

Beam Details



Beam intensities from 1 – 20 m																				
1	2	3	4	5	6	7	8	9	10	11	12	13	14	15	16	17	18	19	20	m
3.3	6.6	9.8	13.1	16.4	19.7	23	26.2	29.5	32.8	36.1	39.4	42.7	45.9	49.2	52.5	55.8	59.1	62.3	65.6	ft
432	108	48	27	17	12	9	7	5	4	4	3	3	2	2	2	1	1	1	1	lux
40.1	10	4.5	2.5	1.6	1.1	0.8	0.6	0.5	0.4	0.3	0.3	0.2	0.2	0.2	0.2	0.1	0.1	0.1	0.1	fc

Intensities in 0° c-plane																				
0°	5°	10°	15°	20°	25°	30°	35°	40°	45°	50°	55°	60°	65°	70°	75°	80°	85°	90°	95°	γ
432	432	424	413	398	386	374	356	333	307	262	200	138	88	60	43	28	15	5	1	cd
100%	100%	98%	96%	92%	90%	87%	82%	77%	71%	61%	46%	32%	20%	14%	10%	6%	3%	1%	0%	of 0°val

Intensities in 90° c-plane																				
0°	5°	10°	15°	20°	25°	30°	35°	40°	45°	50°	55°	60°	65°	70°	75°	80°	85°	90°	95°	γ
432	424	411	396	384	370	352	329	300	249	184	123	78	54	38	24	12	3	1	1	cd
100%	98%	95%	92%	89%	86%	81%	76%	70%	58%	43%	28%	18%	13%	9%	6%	3%	1%	0%	0%	of 0°val

Intensities in 180° c-plane																				
0°	5°	10°	15°	20°	25°	30°	35°	40°	45°	50°	55°	60°	65°	70°	75°	80°	85°	90°	95°	γ
432	424	412	398	386	374	355	333	305	259	194	131	84	56	40	26	13	4	0	1	cd
100%	98%	96%	92%	89%	87%	82%	77%	71%	60%	45%	30%	19%	13%	9%	6%	3%	1%	0%	0%	of 0°val

Intensities in 270° c-plane																				
0°	5°	10°	15°	20°	25°	30°	35°	40°	45°	50°	55°	60°	65°	70°	75°	80°	85°	90°	95°	γ
432	434	428	416	402	389	378	361	339	313	273	211	146	94	61	44	29	16	6	0	cd
100%	101%	99%	96%	93%	90%	88%	84%	79%	72%	63%	49%	34%	22%	14%	10%	7%	4%	1%	0%	of 0°val